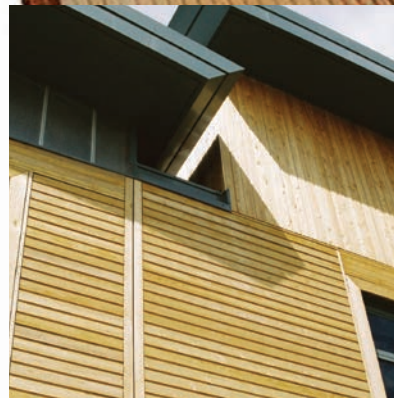
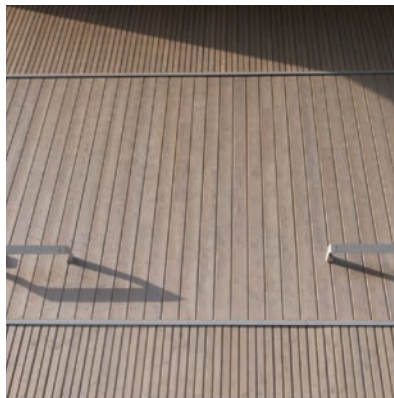




Natural timber cladding options





Certification Sustainable Forestry

Vincent Timber is at the forefront of the campaign to protect the environment, in particular, the world's forests.

We are members of TRADA who act as our auditors and advisors on all matters relating to the proper implementation of Chain of Custody.

Using this system, Vincent Timber is able to supply certified materials from CSA, FSC, PEFC and SFI certified sources which have been fully approved by DEFRA. This covers all legal, sustainable and certification requirements to allow architects to specify with total confidence.



The Company

Vincent Timber, a family-owned company now in its fourth generation, is the premier supplier of timber cladding options in the UK. We manufacture and distribute an unrivalled range of high performance and aesthetically pleasing natural timber products.

Established since 1923, we continue to advise a wide range of customers how to get the best from timber, while working closely with architects, building contractors, specialist installers and specifiers.



Offering the finest range of natural timber cladding products

Products

Continual investment in staff, modern machines and plant, including our modern production mill, enable us to offer a nationwide service with the ability to produce bespoke profiles to suit most requirements.

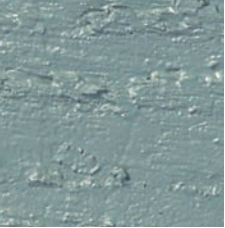
“We continue to blend traditional family values with modern production practices and when these are combined with our enthusiastic and experienced staff, we believe that we give the highest possible levels of service to our valued customers. Our aim is to provide the most professional and consistent advice available within the industry, to ensure that the best cladding solution is obtained by all, producing a successful project.”

JOHN VINCENT
Chairman



CONTENTS

| | |
|---------------------------------|-------|
| CERTIFICATION/INDEX | 2-3 |
| CAPE COD | 4-6 |
| ACCOYA® | 7 |
| SIVALBP® | 8-9 |
| FACTORY COATING | 10 |
| THERMALLY MODIFIED TIMBER | 11 |
| WESTERN RED CEDAR | 12-13 |
| SIBERIAN LARCH | 14 |
| SWEET CHESTNUT AND EUROPEAN OAK | 15 |
| CERTIFIED HARDWOOD CLADDING | 16 |
| TIMBER LOUVRES/FINS | 17 |
| PARKLEX® | 18 |
| CEDAR SHINGLES AND SHAKES | 19 |
| DECKING | 20 |
| FIRE RETARDANT PROTECTION | 21 |
| CAPE COD PROFILES | 22 |
| ACCOYA PROFILES | 23 |
| WESTERN RED CEDAR PROFILES | 24-25 |
| THERMOWOOD PROFILES | 26 |
| HARDWOOD/LARCH PROFILES | 27 |



Cape Cod Cladding

Vincent Timber's technically advanced and finely engineered Cape Cod system is an incredibly durable and low maintenance natural wood product, increasingly popular for its authentic "New England" look.

Since being first introduced in 1999, it has become the product of choice for discerning housebuilders and commercial organisations looking for a natural textured cladding material, in colours designed to complement almost any type of design situation.

Available in an almost infinite range of pre-finished and custom colours, Cape Cod adds prestige and enduring value to your home or business premises – with the added advantage of low maintenance, a full range of colour-matched trims and accessories and stunning good looks.



Cape Cod carries a 15-year factory finish warranty and originates from Canada, where the product was put through a rigorous schedule of climatic performance testing prior to its launch in the UK.



Cape Cod SOLID colours

Standard Colours



Arboretum
CCS60001



Cape Cod Grey
CCS20002



Indian Corn
CCS50009



Cape Cod White
CCS10006



Chesapeake Blue
CCS8001



Ocean Blue
CCS80017



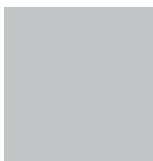
Driftwood Grey
CCS2003



Sandalwood
CCS70001



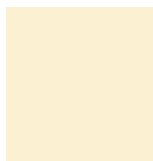
Cape Cod Taupe
CCS70002



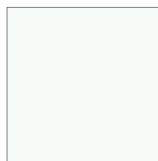
Victorian Grey
CCS20024



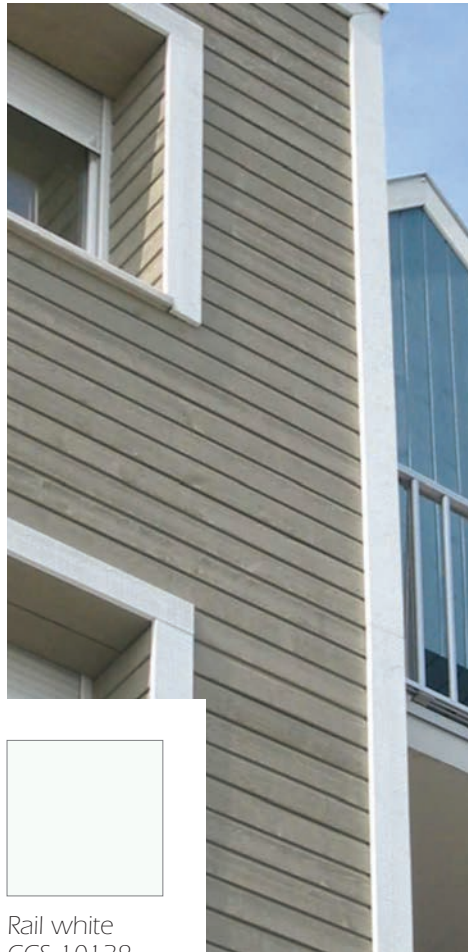
Cape Cod Black
CCS90010



Vanilla
CCS40005



Rail white
CCS 10128



Custom Colours*

Pastel



Celery Green
CCS60025



Ocean Mist
CCS80010



Desert Loam
CCS40026



Adobe Sand
CCS50017

Strong



Woodland Green
CCS60400



Harvest Gold
CCS40013



Pewter
CCS20025



Muted Mesa
CCS50554

Earthy



Cedar
CCS30044



Sage
CCS60302



New Bark
CCS70385

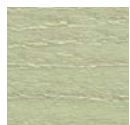


Russet
CCS70039

*Wider range is available, please request a colour selector card. Visit www.vincenttimber.co.uk
Due to limitations of the printing process, colours may vary. Samples are available prior to order.

Cape Cod SEMITransparent

Standard Colours*



Hickory Smoke
CCS21649



Island Sand
CCS32317



New Forest
CCS72595



Bedford Brown
CCS72599



Annapolis
CCS72597



Cape Cod Cedar
CCS72596



Chalet Brown
CCS72829



Redwood
CCS51406

Hickory Smoke
CCS21649



Cape Cod, with coating partner PPG, has developed a stunning range of SEMITransparent colours. Produced to the same high standard, these claddings provide a more 'natural' look whilst retaining a high performance. The range of colours is available in all profiles and trims, with colour matching nails.

- PEFC certified
- 100% useable
- 8 years warranty
- Natural look
- Attractive colour range
- Treated timber
- Wide range of profiles
- Minimised maintenance
- Factory coated systems

Cape Cod Cedar
CCS72596



Accoya® Wood Cladding

Achieving a New Standard in Joinery Timber Products

Accoya® wood is the result of more than 80 years of research and development that have brought together a long established acetylation wood modification technique and cutting edge technology to create a high performance timber product.



Please find our Standard Accoya profiles on page 23



60 year minimum service life

Determined by EN350 and BS8417 standards and substantiated by BRE and TRADA.



FSC

Accoya® wood carries full FSC chain of custody. The radiata pine is grown in well managed plantations where trees are felled at an average of 30 years – a minimum of two trees grow to maturity within the service life of Accoya® wood cladding.



100% Non-toxic

Extensive research from SHR Institute, Netherlands, demonstrates that Accoya® wood is non-toxic, protecting the environment from the harmful effects of poisons leaching into the earth. Accoya® wood may be safely reused and recycled.



Coatings

"Accoya® wood has a significantly better result with respect to long term coating performance compared to untreated wood. The adhesion of the coating to Accoya® wood after 9½ years outdoor exposure is still good. After 9½ years outdoor exposure, untreated test samples had substantially cracked and flaked coating systems and, in some cases, the coating was even completely eroded." SHR Institute, Report Code 3.330-366.

Sivalbp®

8



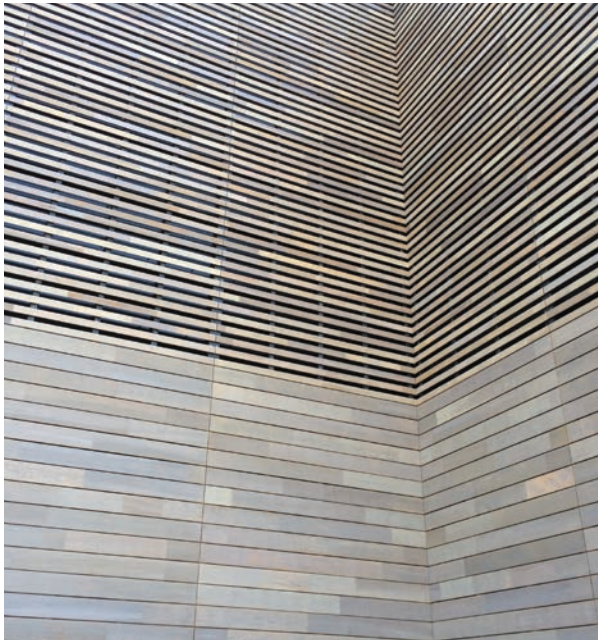
As a leader in its field, Sivalbp® produces an extensive range of coated timber claddings at its ultra-modern and environmentally sensitive production facility.

Available in Siberian Larch, Nordic Spruce and Western Red Cedar with a variety of finishes, including brushed, sanded, pre-weathered grey, natural oiled and opaques.

The pre-weathered grey coating assists the natural ageing process by providing a grey base for the natural weathering process to gradually replace.

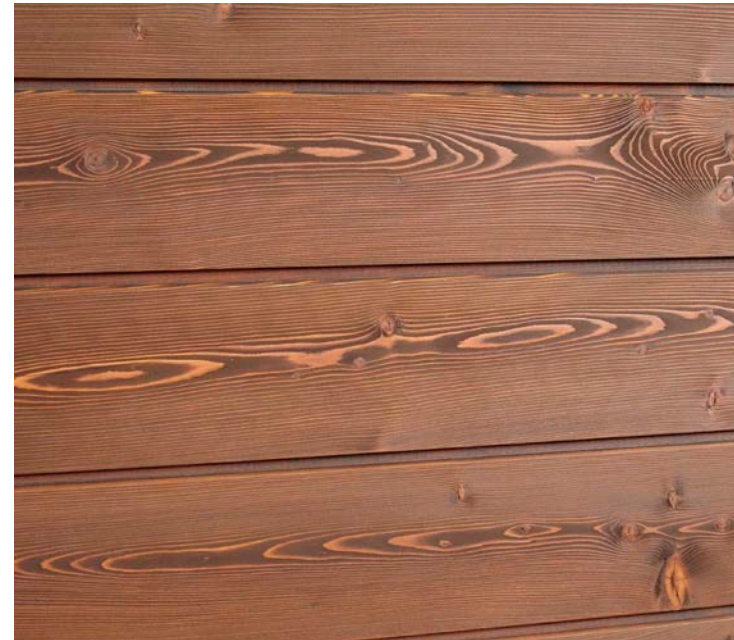
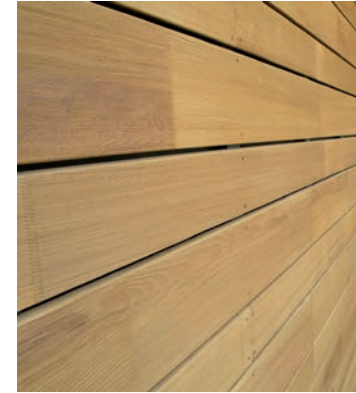
All claddings are supplied with full certification, providing you with a sustainable, aesthetically pleasing and high performance product to add value to any façade.





The benefits of Sivalbp®

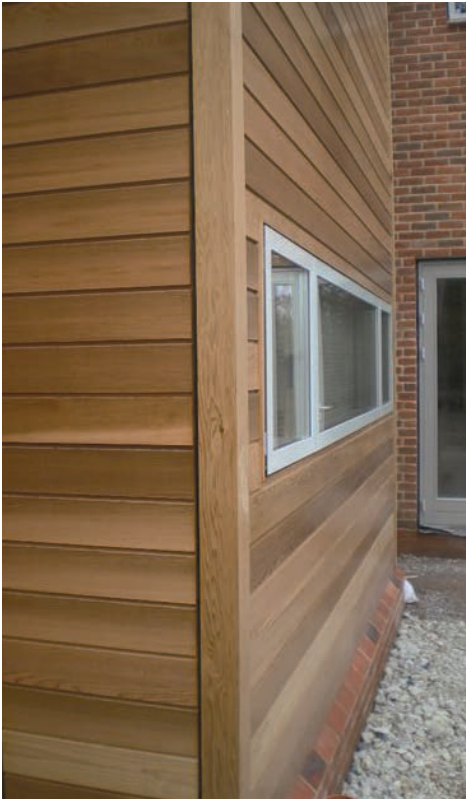
- Benefit from the quality of fully factory applied coatings
- Range of attractive profiles for all design requirements
- Available from a range of durable species
- Options include – pre-weathered grey, natural oiled and fully opaque
- Environmentally friendly coatings
- Supplied with full chain of custody in PEFC & FSC (Species specific)
- Available with textured surfaces or smooth
- Many profiles supplied end-matched, quicker installation, reduced material wastage
- Coating warranty
- Superb packaging for product protection and handling
- Minimal maintenance
- 100% usable
- Easy to install, basic tools required



For further information on combinations of profiles and finishes - please visit our Sivalbp product page on www.vincenttimber.co.uk

Factory Coating

10



Vincent Timber works in partnership with various coating suppliers and approved applicators to provide specifiers with the option of retaining the texture and beauty of wood, while at the same time maintaining a colour which is sympathetic to the natural timber.

Factory coated timber makes it simpler, faster and easier to install on site regardless of weather conditions often resulting in significant cost savings for customers. Coatings applied in this way also benefit from factory controlled conditions which cannot be created so easily on site.

Vincent Timber is able to provide translucent and opaque coatings on a wide variety of timber substrates and supplies a range of material coatings to enhance the look of its extensive range of cladding products – factory finished to order.

As well as traditional pigmented coatings that have historically protected timber cladding and endured the weathering effects of the sun's UV rays, Vincent Timber now offers a unique clear coating for extended protection without pigmentation. Vincent Timber supplies a wide range of coated materials, using Sikkens, Teknos, Morrells and many more!



Thermally Modified Timber

Vincent Timber supplies a wide range of thermally treated timbers, in the form of cladding, decking, louvres and timber components where durability and stability are required.

Vincent Timber supply thermally treated materials from Thermowood Association and other approved suppliers. We provide cost effective, environmentally friendly and high performance solutions in pine and selected hardwoods.



Specially kiln dried at an incredibly high temperature to reduce its moisture content, the product has a dramatically high tolerance to extremes in temperature. The heat treatment process also rids the timber of resin, stopping seepage.



Please find our standard Thermowood profiles on page 26



Western Red Cedar

Vincent Timber is renowned for supplying the highest commercial grade of WRC available to the UK, meeting the requirements of Class 1 and CSH grades. Cedar is a highly versatile, attractive and durable cladding material – proving increasingly popular as it combines superb long term performance and impressive thermal insulation properties.

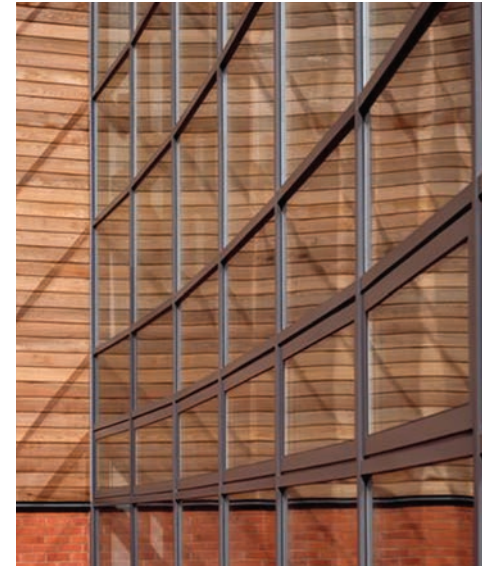
The rich warm colour and texture of Cedar gives any building, inside or out, a touch of individuality that blends effortlessly with the environment. Lightweight and ideal for fast-track building schemes, it is also more resistant to warping, twisting and shrinking than any other softwood.

Cedar can be left untreated to turn an attractive silvery grey patina or can carry pigmented finishes. It can also be supplied pre-coated.

Please find our Standard Western Red Cedar profiles on pages 24 & 25



Coated Cedar



Siberian Larch

(Larix Siberica)

Siberian Larch is a natural timber cladding imported from Russian forests that combines the strength of hardwoods like English Oak with a pleasing warm colour. It can achieve FSC certification and has similar characteristics in terms of density and durability as most hardwoods. Siberian Larch, which is harvested over a 580 million acre forested area consisting of 50% Larch, is also incredibly impact resistant and offers excellent service life and longevity.

Despite its incredible performance properties, Siberian Larch is up to 30% less expensive than traditional solutions providing both quality and value for money.

Offering both cladding and fascia options, Siberian Larch is ideal for projects where strength, sustainability and environmental considerations are paramount.

Please find our standard Larch/Hardwood profiles on page 27



Photos reproduced with the kind permission of Charles Barclay Architects



Sweet Chestnut & European Oak



European Sweet Chestnut and Oak have traditionally been used as claddings and are now becoming popular again. They offer a winning combination of durability, strength, attractive colour and grain appearance.

Various grades are available plus new technology allows us to supply finger jointed material, enabling the product to be supplied with low knot content and set lengths to control wastage.

Certified Hardwood Cladding

16



Vincent Timber can supply a wide range of tropical and temperate hardwood claddings and associated products. These are supplied fully certified to give you assurance that you are using sustainable materials on your project.

There are many species to choose from with popular ones being Red Louro, Cumuru, Tatajuba and Massaranduba.



Please find our standard Larch/Hardwood profiles on page 27

Timber louvres/Fins

Our timber louvres are supplied in a range of species, the ever popular Western Red Cedar for its stability and durability, Thermowood, Siberian Larch and also Accoya, Sweet Chestnut, European Oak.

Vincent Timber also offers finger jointed and laminated louvres in a range of species as a cost-effective and aesthetic solution.

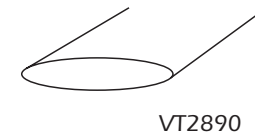
With years of experience supplying the UK's leading louvre fabricators and installers, Vincent Timber has developed a range of additional services to complement its high quality product offering. These include precision cutting, specialist drilling and factory-applied coatings to suit virtually any project's needs.



Vincent Timber supply a range of standard elliptical aerofoils (see below). We can also supply rhombus, rectangular and bespoke profiles where required.



40f x 140f



40f x 180f



VT4184

40f x 230f



VT4490

40f x 280f

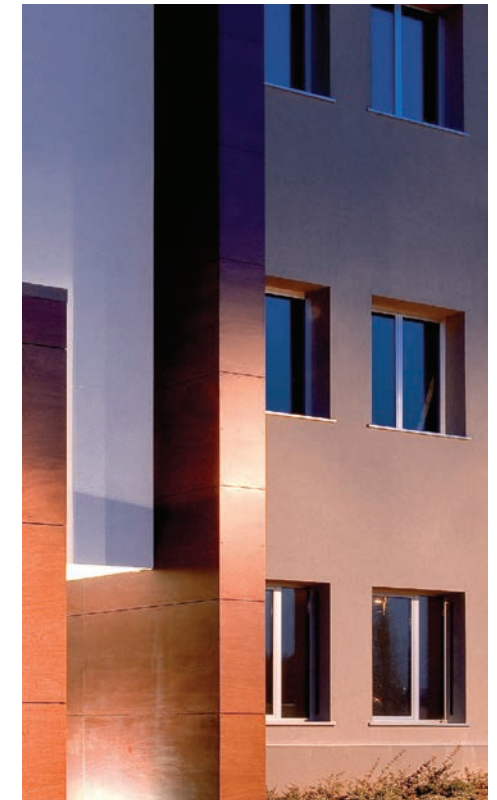
Standard air dried cedar louvres may be subject to dimensional movement.

Vincent Timber reserve the right to alter dimensions at any time at our discretion

Parklex®

Using a base of high-density laminated wood, Parklex® utilises a manufacturing process that gives natural timber extraordinary properties of climatic resistance and durability. This makes it ideal for use on an extensive range of building exteriors and interiors.

18



Each Parklex® façade is made from resin-treated kraft paper and natural timber, thermoset under high pressure and temperature.

This patented technology allows for the appearance of each natural timber veneer to be entirely unique, as well as making each panel extremely resistant to weathering or UV radiation. Parklex® façade panels are available in an extensive range of finishes.

Cedar Shingles and Shakes

Vincent Timber supplies an extensive range of Cedar timber shakes and shingles. Bringing aesthetic charm to almost any building, their natural insulation properties and light weight make them the perfect choice for sustainable industrial, commercial or housing projects.



Cedar shingles weigh one tenth of traditional roofing materials, resulting in less structural stress. Furthermore, their thermal conductivity is the lowest of any roofing material available – making for an exceptionally warm roof. Shingles are also one of the most flexible of all cladding and roofing materials and can be successfully installed on curved areas and other geometric shapes.

Untreated, preservative treated or fire retardant, Vincent Timber's Cedar shingles and shakes will withstand the harshest weather conditions with preservative treated shingles having a life expectancy in excess of 40 years when installed correctly.

Technical advice and support is always available from Vincent's experienced team.

European Oak / Sweet Chestnut

Vincent Timber can also supply these traditional materials in shakes to complement projects. These are normally supplied untreated, however preservative treated and fire retardant options are available.

Decking

Vincent Timber supplies a wide range of decking products in both hard and soft wood. The range of hardwood and softwood includes:

- European Oak
- Massaranduba
- Siberian Larch
- Thermowood 'D' Pine
- Tropical FSC hardwood
- Treated European softwood
- Thermo Ash
- Walksure
- Western Red Cedar

Decking can be supplied in smooth, ribbed or grooved and with additional anti-slip inserts if required. The Vincent Timber range covers all aesthetic and performance requirements.



LunaComp

LunaComp Deck is a new, innovative, and ultra-strong wood plastic composite decking product. Available in Graphite Grey or Rich Mocha Brown, it has superior durability, retaining its colour, shape and strength in all weathers. Easy maintenance and good stability properties provide a beautiful deck for years.

WalkSure®

WalkSure® combines rubber and pressure treated softwood in a single deck board to create a stylish, colourful and slip resistant decking solution for wet and dry conditions. For a stunning new decking system that doesn't compromise on safety, WalkSure® is the decking system you can trust to perform every time.

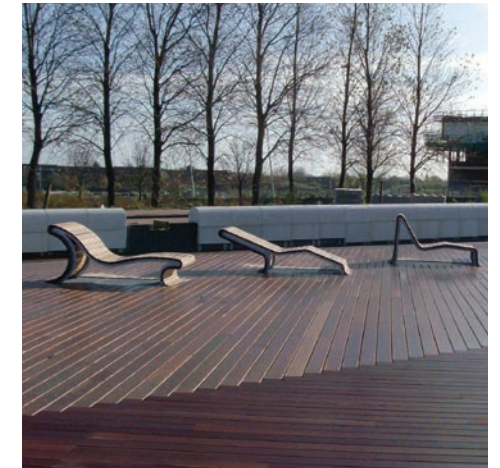


ThermoWood®

Ideal for decking in exposed areas, ThermoWood® is a durable, versatile and all-weather decking solution made from Scandinavian softwood. Offering up to 30 years service life, ThermoWood® is a high performance solution which features a chemical free heat treatment that makes it naturally weather resistant in addition to being environmentally friendly.

GrasseDeck®

GrasseDeck PRO decking combines the strength and durability of pressure-treated softwood with artificial grass that looks as good, if not better than real turf. For any decking project where a natural aesthetic, performance and slip resistance are vital, GrasseDeck PRO from Vincent Timber is the one-stop-shop solution.



Fire Retardant Protection

Internal applications



FIRE RETARDANT TREATED TIMBER
FOR INTERIOR & WEATHER PROTECTED SITUATIONS

External uncoated applications



FIRE RETARDANT TREATED TIMBER
FOR EXTERIOR OR SEVERE DAMP SITUATIONS



**Arch
Timber
Protection**



Vincent Timber in partnership with Arch Timber Protection can offer effective and permanent fire retardant treatments for both interior and exterior cladding timbers. DRICON, for interior applications, is the only fire retardant treatment for timber with BBA accreditation and NON-COM Exterior, for full external applications, is the only NHBC accepted fire retardant treatment for external timber cladding.

Cape Cod Profiles*

Rebated Bevel 6

22f x 137f/120mm face

Rebated Bevel 8

22f x 178f/160mm face

Rebated Euro Channel

18f x 137f/120mm face

Rebated Shiplap

18f x 137f/120mm face

Rebated V-Joint

18f x 137f/120mm face

Rhombus

18f x 164f/57mm face (excludes gap)

18f x 135f/129mm face (excludes gap)

Double Rhombus

18f x 137f/122mm face

Board on Board/Batten

18mm x 64mm

18mm x 120mm

18mm x 136mm

18mm x 178mm

Please Note

1 – Face cover excludes the recommended 2mm expansion gap at installation

2 – Cape Cod reserves the right to alter profile dimensions at any time at our discretion. Timber is hygroscopic, this can affect overall dimensions. Please contact our sales office or your distributor for confirmation of the volumes required for your project

3 – Illustration purposes only – not to scale

4 – Cape Cod Cladding has a textured surface

Rebated
Bevel 6

Rebated
Bevel 8

Rebated Euro
Channel

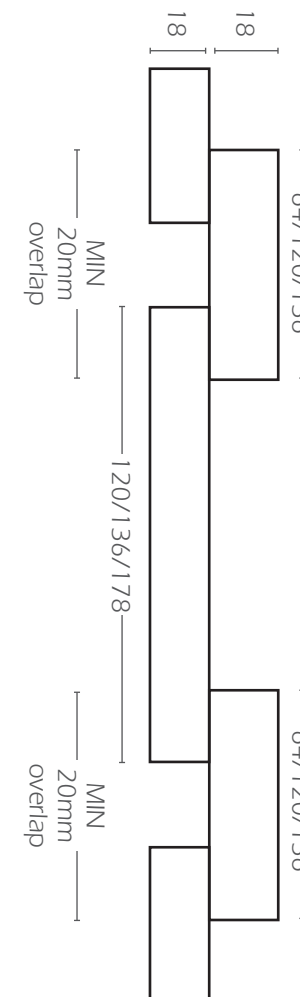
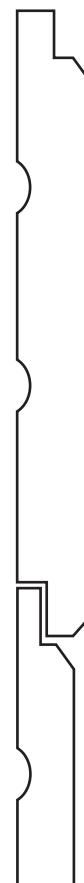
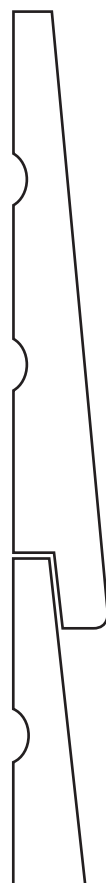
Rebated
Shiplap

Rebated
V-Joint

Rhombus

Double
Rhombus

Board on
Board/Batten



Accoya Profiles

VTA7.4 Vertical (Secret fix)

15f x 95f/77mm face

VTA7.6 Vertical (Secret fix)

15f x 144f/126mm face

VTA7.8 Vertical (Secret fix)

15f x 195f/177mm face

VTA9.4 Vertical (Secret fix)

15f x 95f/77mm face

VTA9.6 Vertical (Secret fix)

15f x 144f/126mm face

VTA9.8 Vertical (Secret fix)

15f x 195f/177mm face

VTA10.4 Horizontal (Secret fix)

15f x 95f/77mm face

VTA10.6 Horizontal (Secret fix)

15f x 144f/126mm face

VTA10.8 Horizontal (Secret fix)

15f x 195f/177mm face

Please Note

1 – These profiles are designed for Accoya and can be used non-coated or coated.

2 – Vincent Timber reserve the right to alter dimensions at any time at our discretion.

3 – Illustration purposes - not to scale

VTA7.4

VTA7.6

VTA7.8

VTA9.4

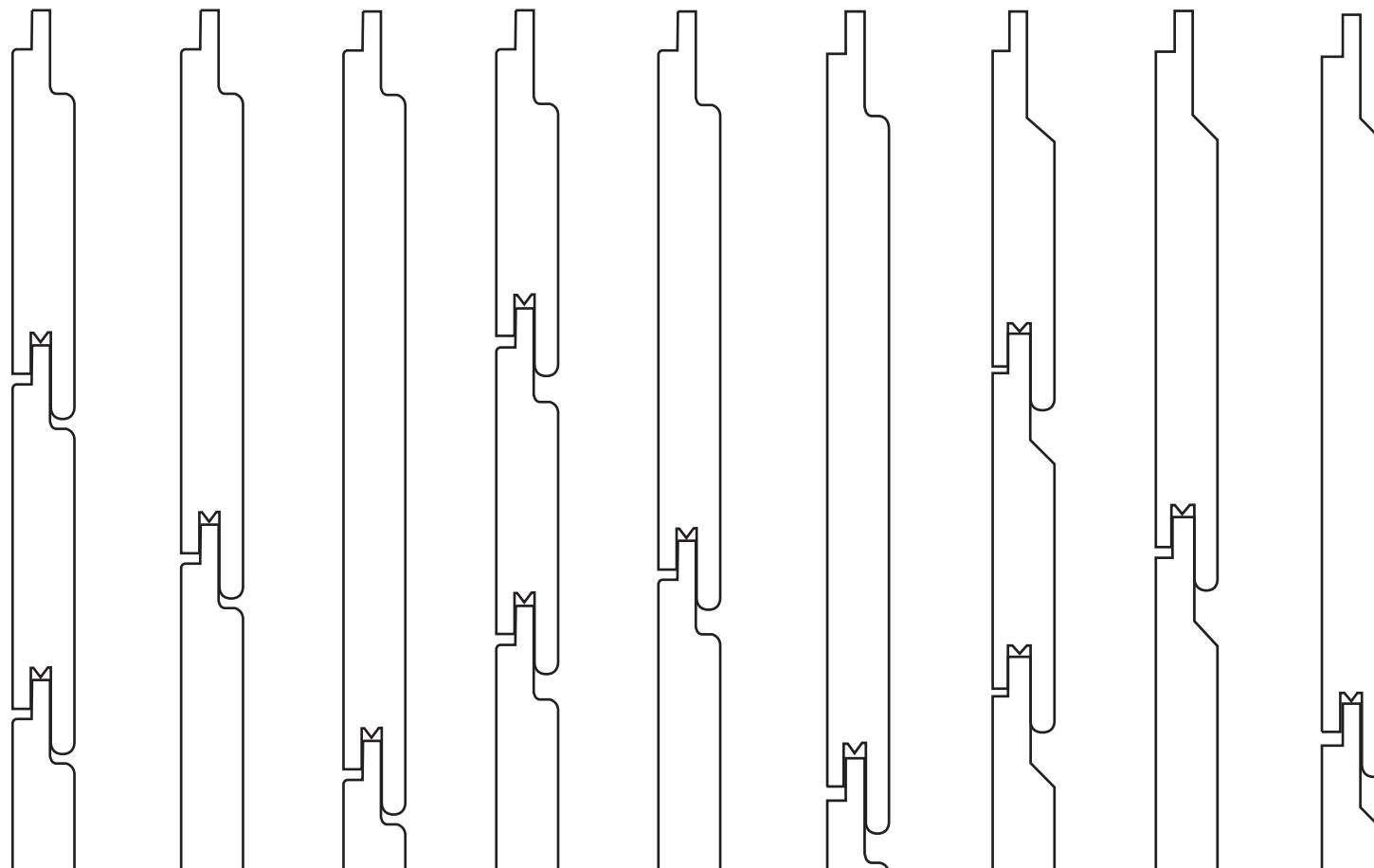
VTA9.6

VTA9.8

VTA10.4

VTA10.6

VTA10.8



Standard Profiles - Western Red Cedar

VT1 Horizontal

18f x 145f/135mm face

VT2 Horizontal

18f x 145f/135mm face

VT3 Horizontal

18f x 145f/135mm face

VT4 Vertical

18f x 145f/135mm face

VT6 Horizontal (Secret fix)

18f x 145f/125mm face

VT7 Vertical (Secret fix)

18f x 145f/125mm face

VT8 Vertical

18f x 145f/135mm face

VT9 Vertical (Secret fix)

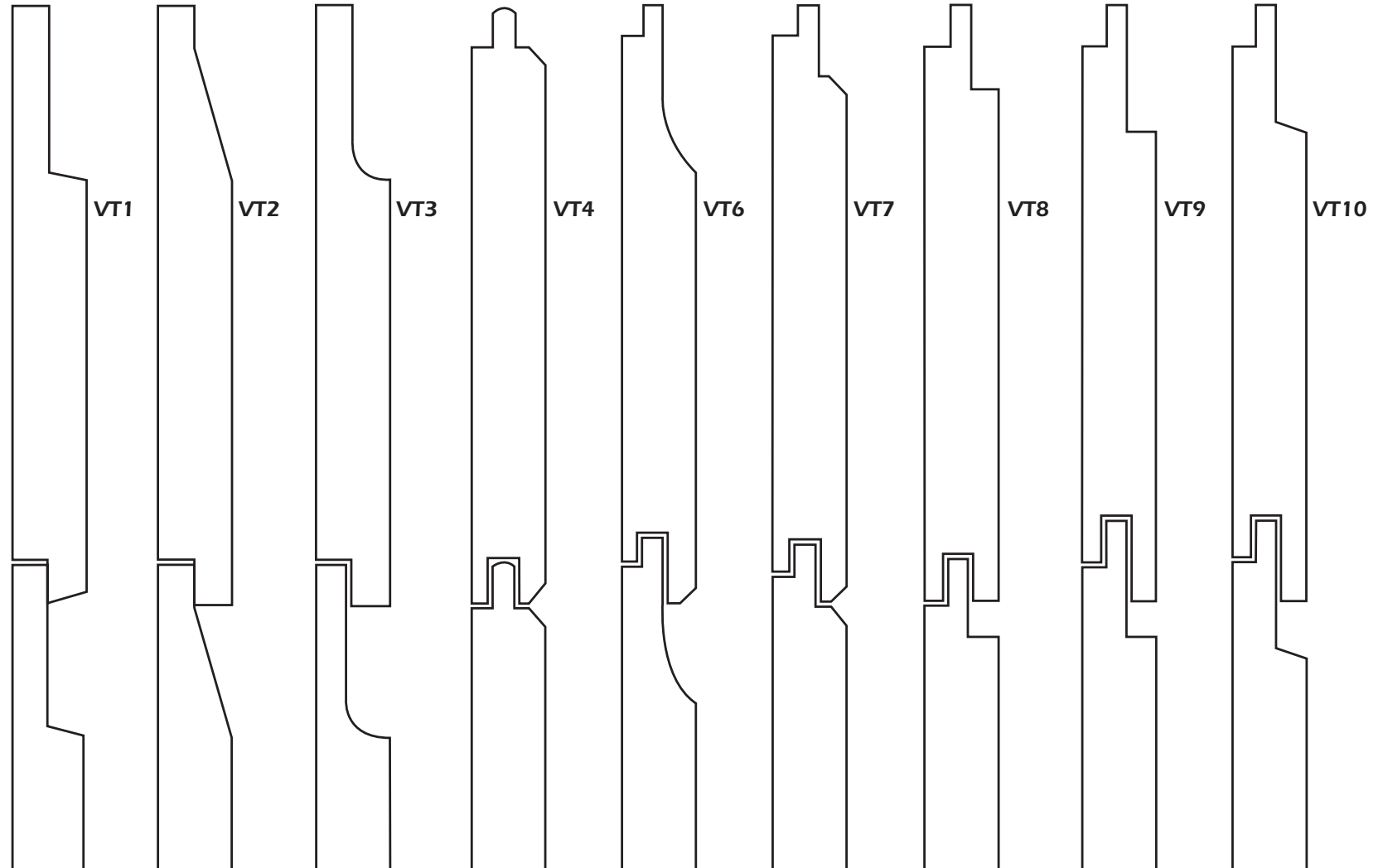
18f x 145f/125mm face

VT10 Horizontal (Secret fix)

18f x 145f/125mm face

Please Note

- 1 – All these profiles are designed for Western Red Cedar and dimensions provided are for air dried/green cedar. Face cover excludes the recommended 2mm expansion gap at installation
- 2 – Vincent Timber Ltd. reserves the right to alter profile dimensions at any time at our discretion.
- 3 – Please refer to office for advice on profiles for other species due to the varying characteristics of timber.
- 4 – Kiln dried versions are also available, with special profiles where coatings are required, please contact sales office for advice.
- 5 – Illustration purposes only - not to scale.
- 6 – Secret fix means hidden fixings



Standard Profiles

VT4542C

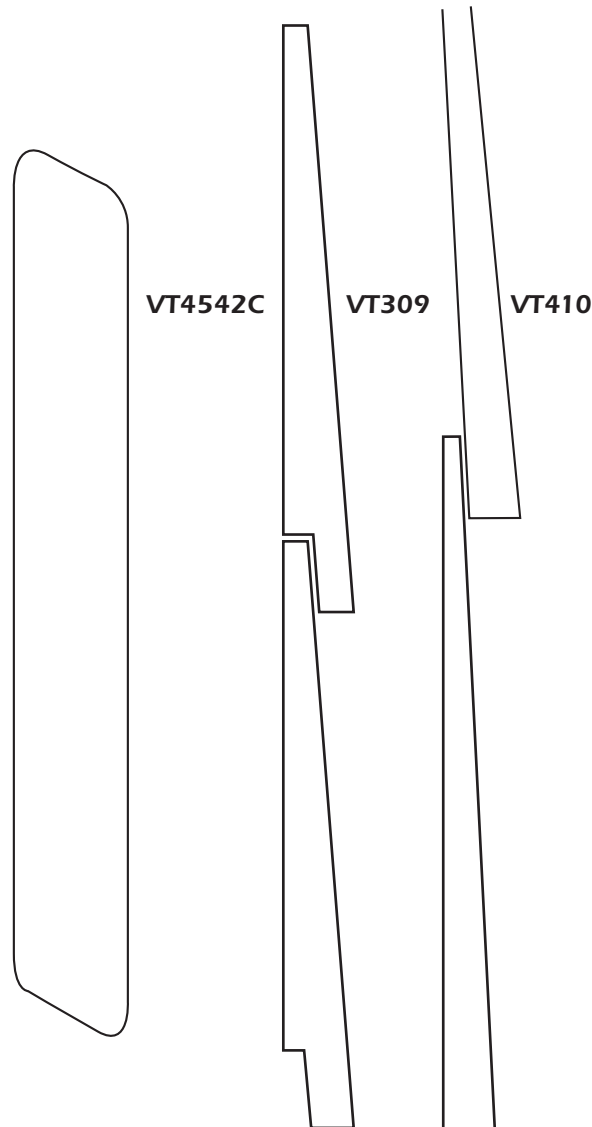
18f x 142f/134mm face (excludes gap)

VT309

18f x 145f/125mm face
(textured face)

VT410

12/4 x 140/115mm
textured or planed face available.



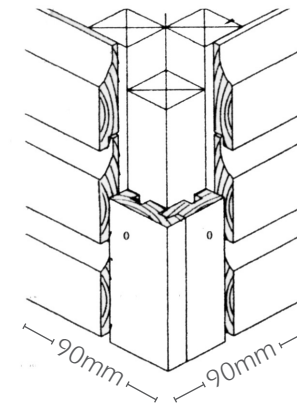
Please Note

- 1 – All these profiles are designed for Western Red Cedar and dimensions provided are for air dried/green cedar. Face cover excludes recommended 2mm expansion gap at installation
- 2 – Vincent Timber Ltd. reserves the right to alter profile dimensions at any time at our discretion. Timber is hygroscopic - this can affect overall dimension.
- 3 – Please refer to office for advice on profiles for other species due to the varying characteristics of timber.
- 4 – Kiln dried versions are also available, with special profiles where coatings are required, please contact sales office for advice.
- 5 – Illustration purposes only - not to scale.

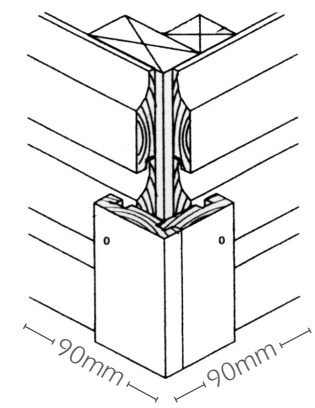
Corner Details - all species

You can choose from one of these options or we can produce special profiles and sections in our own mill to suit your individual application. All sections required for coating have 3mm rounds.

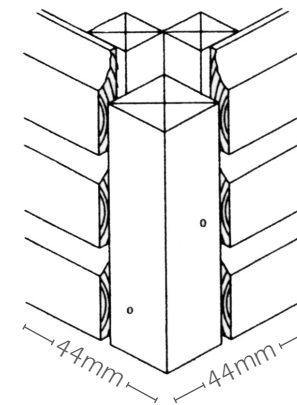
2-piece Flush External



2-piece Proud External



1-piece External



Fixings

Vincent Timber recommends the use of stainless steel fixings, ideally small round headed, annular ring shank nails.

Standard Profiles - Thermowood

VT2562 Horizontal (Secret fix)

21f x 142f/122mm face

VT2563 Vertical (Secret fix)

21f x 142f/122mm face

VT2567 Horizontal (Secret fix)

21f x 118f/98mm face

VT2566 Vertical (Secret fix)

21f x 118f/98mm face

VT718 Vertical

21f x 118f x 110mm face

VT2522 Horizontal

21f x 118f x 110mm face

VT4492 Vertical

21f x 118f x 110mm face

VT4422C Vertical

21f x 142f/134mm (excludes gap)

TAPERED Horizontal

21f x 142f/132mm face

VT2562

VT2563

VT2567

VT2566

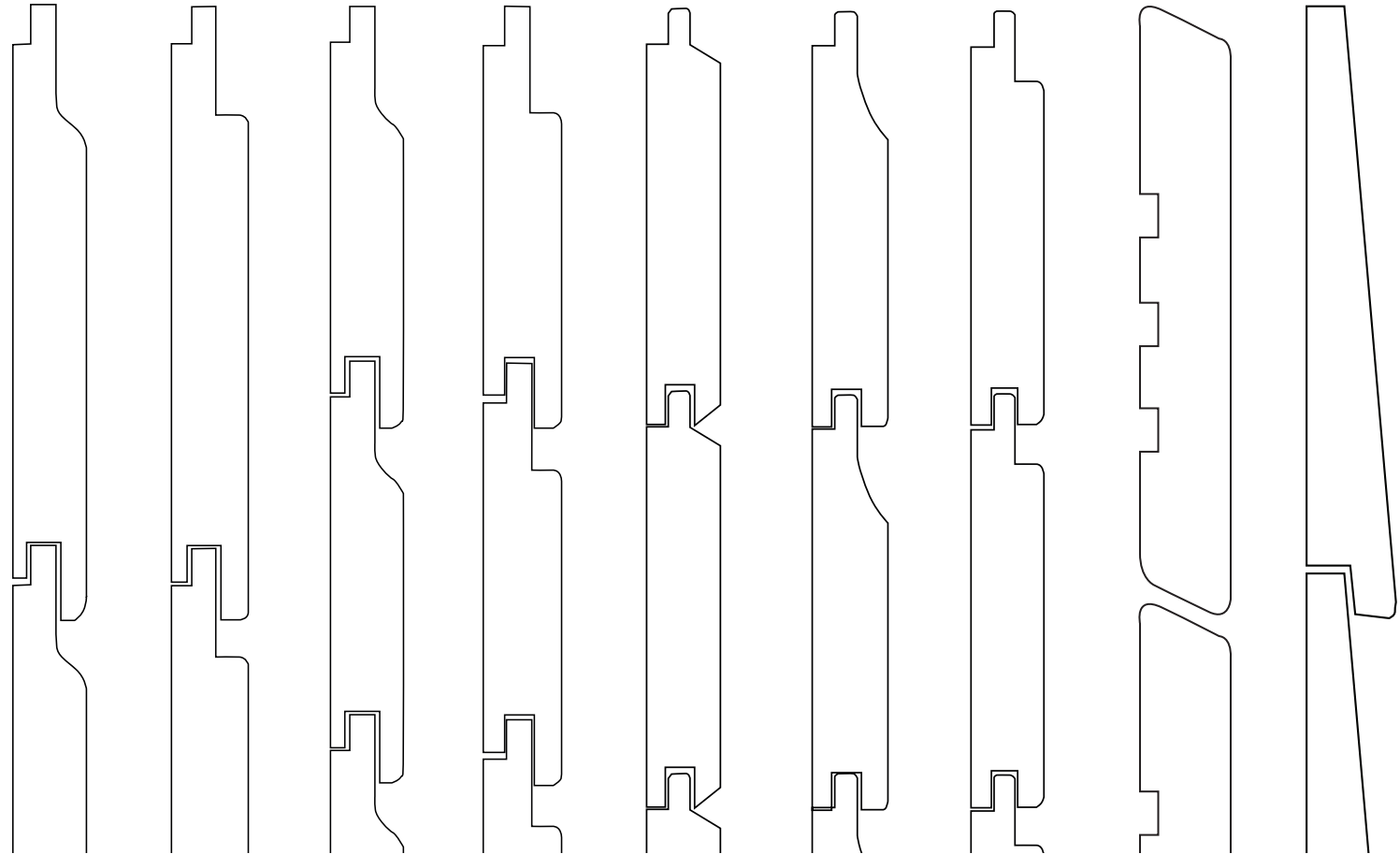
VT718

VT2522

VT4492

VT4422C

TAPERED



Please Note

- 1 - Face cover excludes recommended 2mm expansion gap at installation
- 2 - Vincent Timber reserves the right to alter profile dimensions at any time at our discretion. Timber is hydroscopic, this can affect overall dimensions. Please contact sales office for advice on profile suitability for coating application.
- 3 - Illustration purposes only – not to scale
- 4 - Secret fix means hidden fixings

Hardwood/Larch Profiles

VT3042 Both

21f x 145f/134mm face

VT3304 Vertical

21f x 145f/134mm face

VT3305 Vertical

21f x 145f/134mm face

VT3309 Vertical

21f x 145f/134mm face

VT3309C Vertical

21f x 145f/134mm face

VT3310 Horizontal

21f x 145f/134mm face

VT3310C Horizontal

21f x 145f/134mm face

VT4422 Horizontal

21f x 142f/134mm face

(excludes gap)

VT4024 Horizontal

21f x 142f/134mm face

Please Note

- 1 – Face cover is based on a 4mm expansion gap at installation
- 2 – Vincent Timber reserves the right to alter profile dimensions at any time at our discretion. Timber is hydroscopic, this can affect overall dimensions. Please contact sales office for advice on profile suitability for coating application.
- 3 – Illustration purposes only – not to scale
- 4 – Face fixed profiles only, due to species characteristics

VT3042

VT3304

VT3305

VT3309

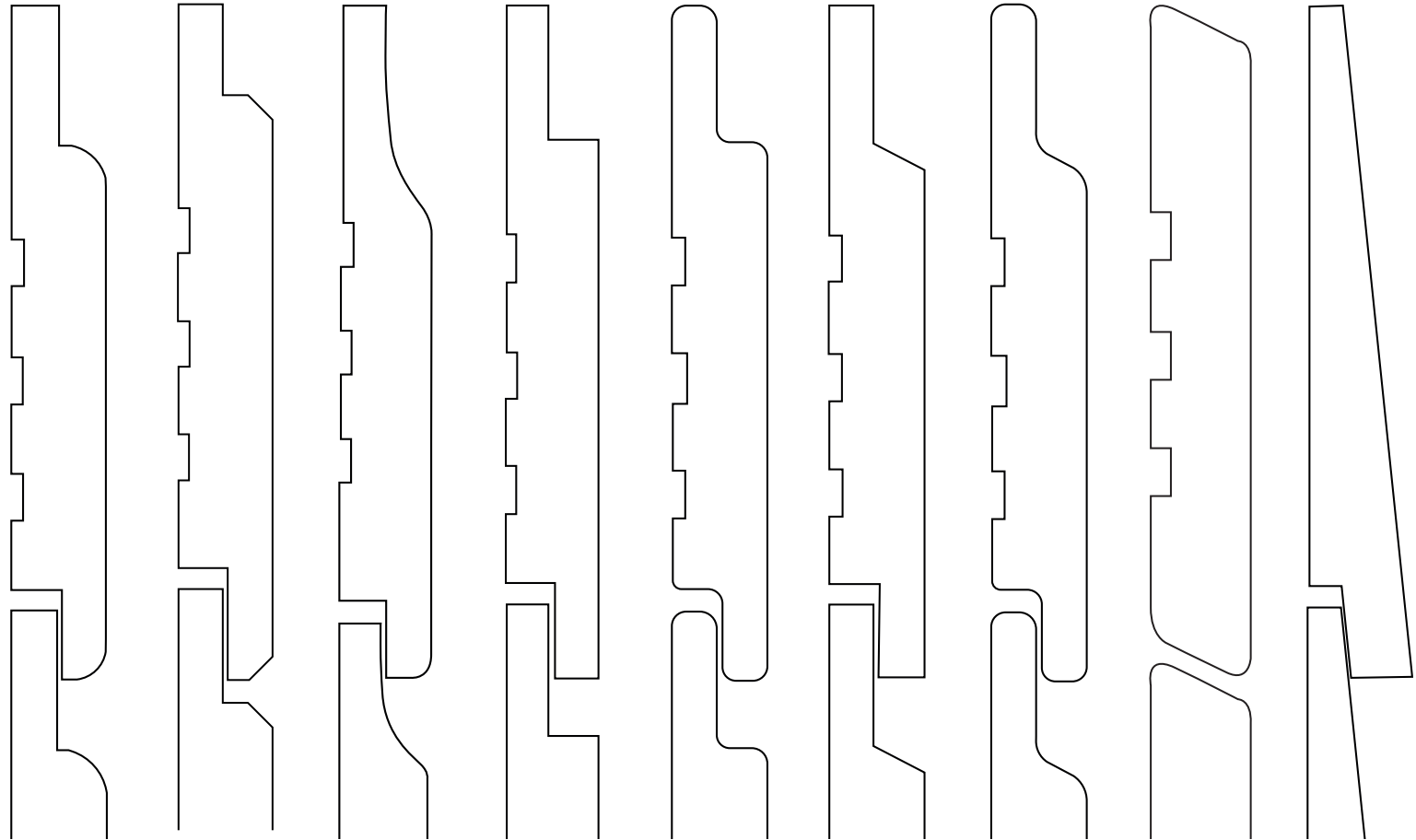
VT3309C

VT3310

VT3310C

VT4422C

VT4024



Vincent Timber Limited
8 Montgomery Street
Birmingham B11 1DU
Telephone:
0121 772 5511
Fax:
0121 766 6002
Email:
sales@vincenttimber.co.uk
Website:
www.vincenttimber.co.uk



www.vincenttimber.co.uk

